

GRATES  
BY **NEKEEMA**

# PRODUCT RANGE

2021 Catalogue



[WWW.GRATESBYNEKEEMA.COM.AU](http://WWW.GRATESBYNEKEEMA.COM.AU)

GRATES  
BY **NEKEEMA**

# MADE TO MEASURE

2021 Catalogue



**WaterMark**

WMTS 040

Certificate No: 23389



[WWW.GRATESBYNEKEEMA.COM.AU](http://WWW.GRATESBYNEKEEMA.COM.AU)

# Tile Insert Channel

PRODUCT CODE | NTL100304, NTL100316, NTL75304, NTL75316

## Product Description

Our Tile Insert is the most popular drainage solution we provide with its discreet lines and almost invisible look

## Options

Supplied in 304 or 316 grade stainless steel

## Standard Dimensions

100mm wide x 25mm deep

75mm wide x 25mm deep

*(custom sizes available on request)*

## Benefits

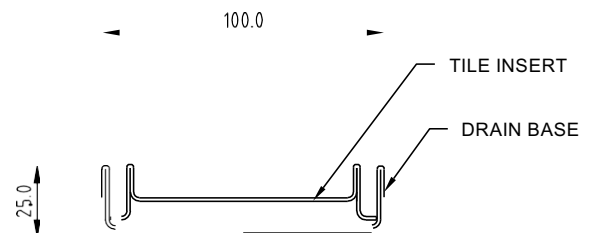
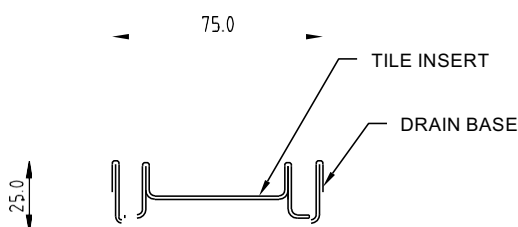
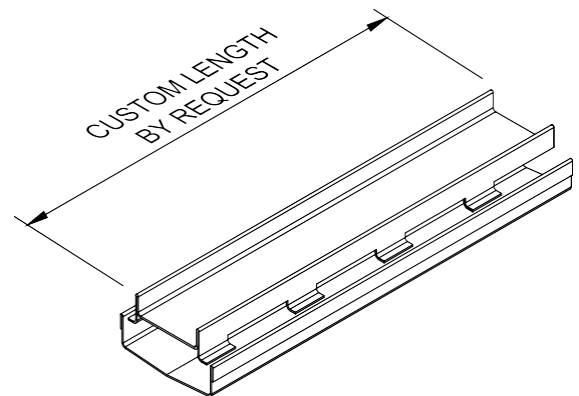
Short lead time

## Outlet

Outlet position and size made to order

Available sizes:

38mm, 44mm, 51mm, 63mm, 76mm, 89mm



# Square Bar Grate & Channel

PRODUCT CODE | NSB100304, NSB100316, NSB75304, NSB75316

## Product Description

Our square bar grating option adds a lineal robust look to your new bathroom and is an excellent choice for your outdoor areas

## Options

Supplied in 304 or 316 grade stainless steel

## Standard Dimensions

100mm wide x 25mm deep

75mm wide x 25mm deep

(custom sizes available on request)

## Benefits

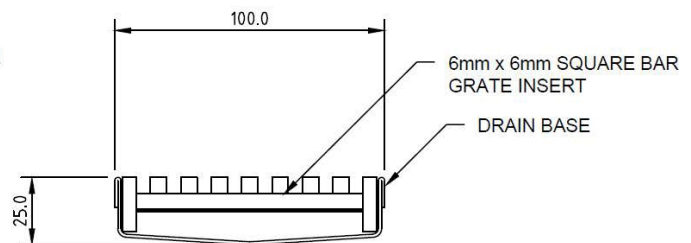
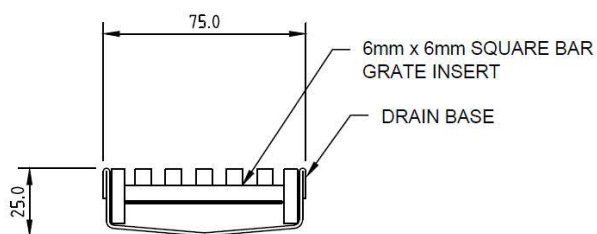
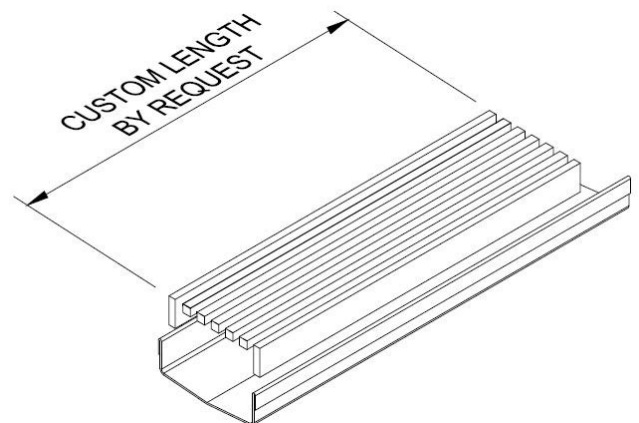
Short lead time

## Outlet

Outlet position and size made to order

Available sizes:

38mm, 44mm, 51mm, 63mm, 76mm, 89mm





# Wedge Wire Grate & Channel

PRODUCT CODE | NWW100304, NWW100316, NWW75304, NWW75316

## Product Description

Our Wedge Wire grating is one of the most popular in our range giving a clean linear look to your bathroom or outdoor area

## Options

Supplied in 304 or 316 grade stainless steel

## Standard Dimensions

100mm wide x 25mm deep

75mm wide x 25mm deep

*(custom sizes available on request)*

## Benefits

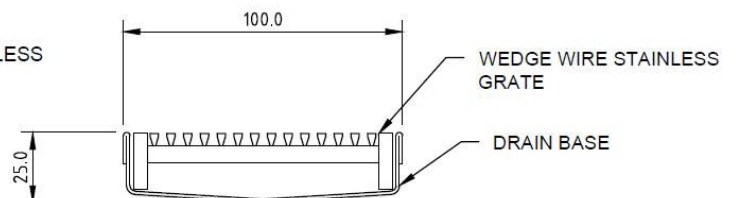
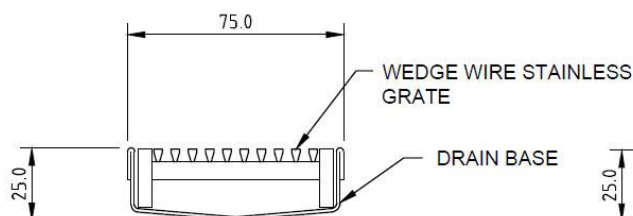
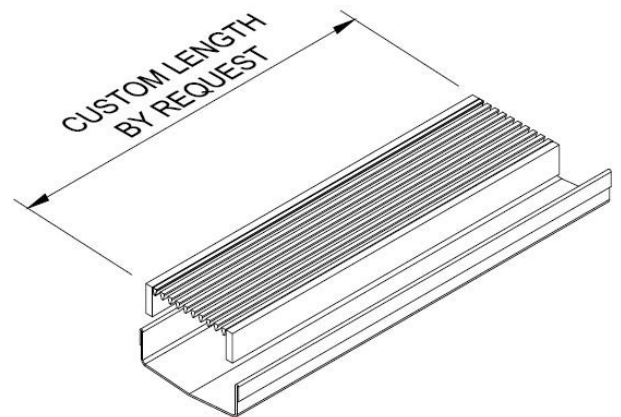
Short lead time

## Outlet

Outlet position and size made to order

Available sizes:

38mm, 44mm, 51mm, 63mm, 76mm, 89mm



# Tile Insert Point Drains

PRODUCT CODE | NTL100ST-50, NTL130ST-100, NTL130ST-80

## Product Description

Our Tile Insert is the most popular drainage solution we provide with its discreet lines and almost invisible look

## Options

Supplied in 304 grade stainless steel

## Dimensions

NTL100ST-50

(100mm square 50mm outlet)

NTL130ST-100

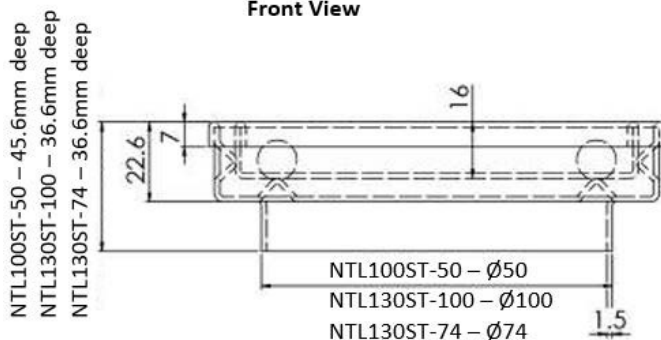
(130mm square 100mm outlet)

NTL130ST-74

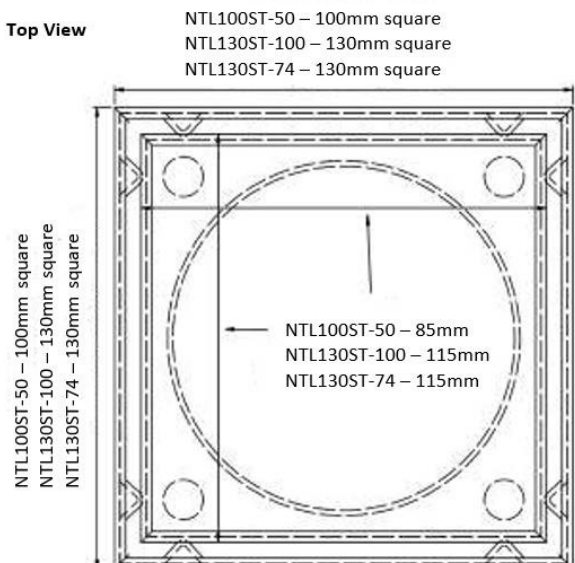
(130mm square 74mm outlet)



Front View



Top View



Side View



GRATES  
BY **NEKEEMA**

# UPVC RANGE

## 2021 Catalogue



**WaterMark**

WMTS 040

Certificate No: 23389



[www.gratesbynekeema.com.au](http://www.gratesbynekeema.com.au)

# UPVC Kit – Wedge Wire

PRODUCT CODE | NWW1081, NWW10815

## Kit Includes

Wedge Wire Grate  
UPVC Base Channel  
End Caps  
Silicone  
Outlet (as per your selected size)  
Holesaw to suit

## Standard Dimensions

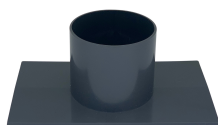
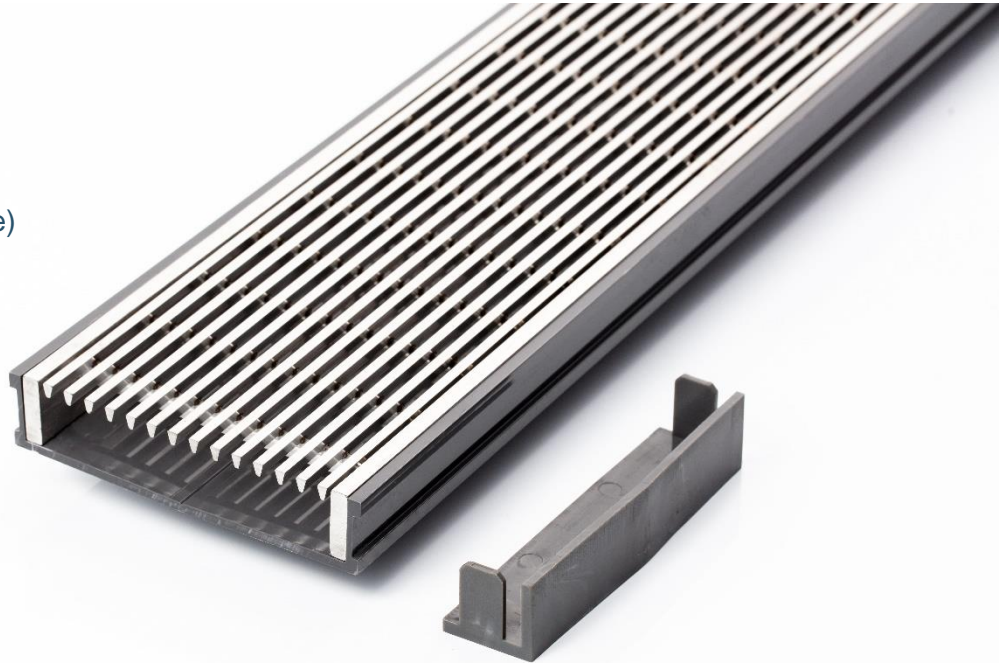
108mm wide x 28mm deep

## Lengths Available

1 metre  
1.5 metre

## Benefits

Short lead time





# UPVC Kit – Tile Insert

PRODUCT CODE | NTL1081, NTL10815

## Kit Includes

Tile Insert Tray (stainless steel)  
UPVC Base Channel  
End Caps  
Silicone  
Outlet (as per your selected size)  
Holesaw to suit

## Standard Dimensions

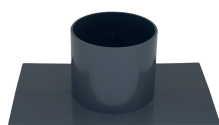
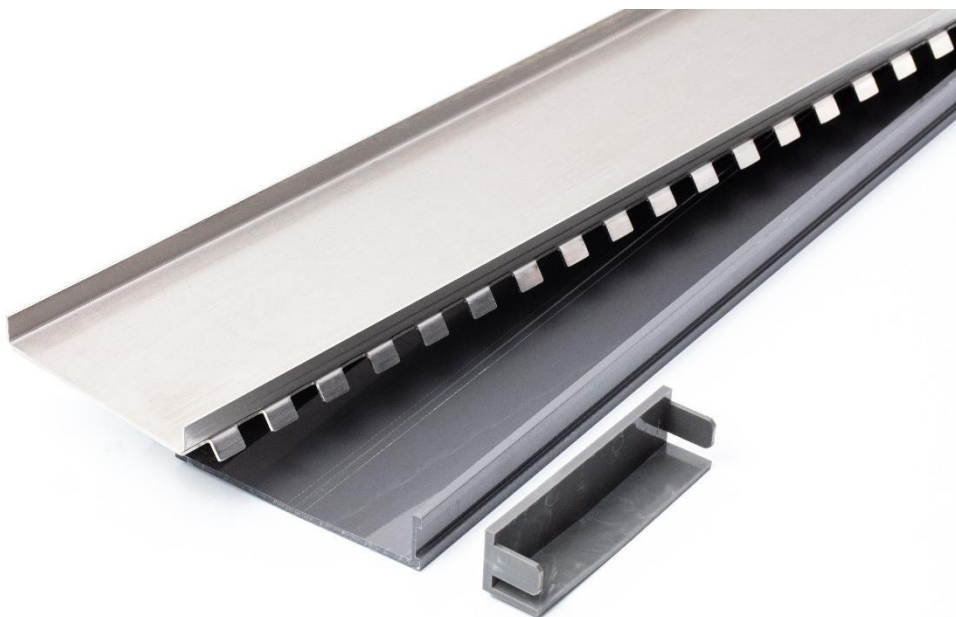
108mm wide x 28mm deep

## Lengths Available

1 metre  
1.5 metre

## Benefits

Short lead time





# UPVC Kit – Brick Pattern

PRODUCT CODE | NBP1081, NBP10815

## Kit Includes

Brick Pattern Grate  
UPVC Base Channel  
End Caps  
Silicone  
Outlet (as per your selected size)  
Holesaw to suit

## Standard Dimensions

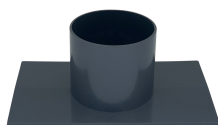
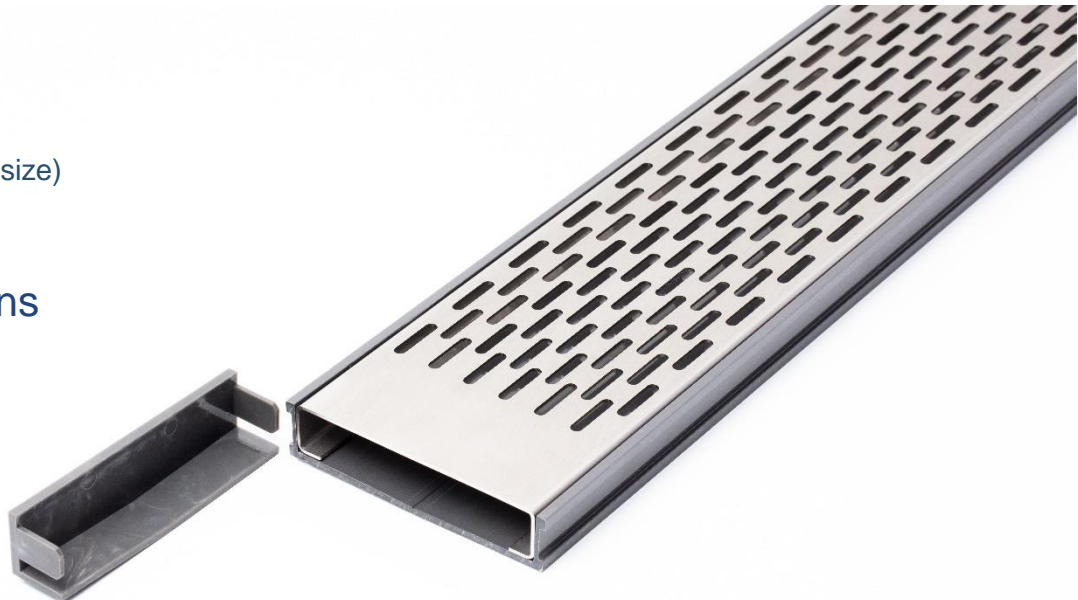
108mm wide x 28mm deep

## Lengths Available

1 metre  
1.5 metre

## Benefits

Short lead time



# Brick Pattern Grate

PRODUCT CODE | NBP1001, NBP10015

## Options

Brick Pattern Grate only to suit UPVC Base Channel

## Standard Dimensions

100mm wide x 20mm deep

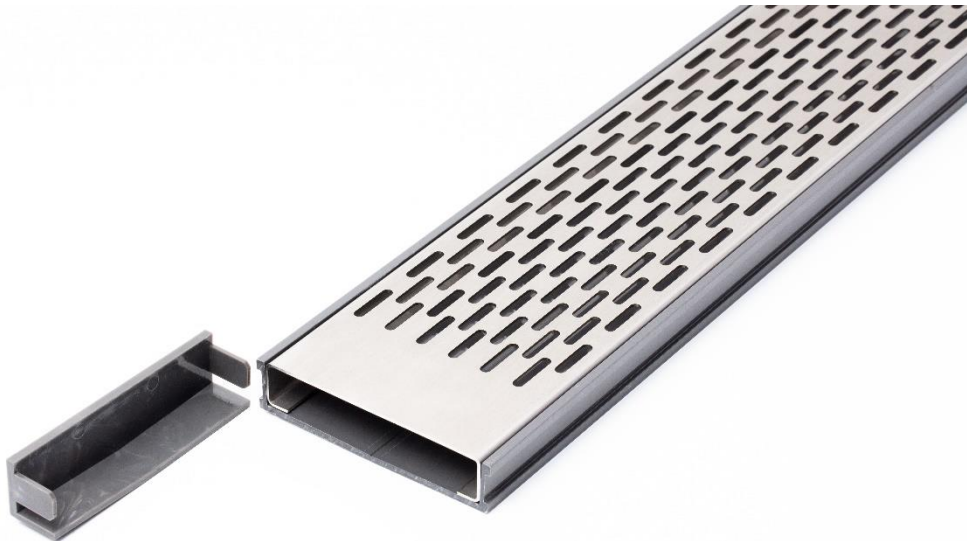
## Lengths Available

1 metre

1.5 metre

## Benefits

Short lead time



# Wedge Wire Grate

PRODUCT CODE | NWW1001, NWW10015, NWW1501, NWW15015

## Options

Wedge Wire Grate only to suit UPVC Base Channel

## Standard Dimensions

100mm wide x 20mm deep

150mm wide x 50mm deep

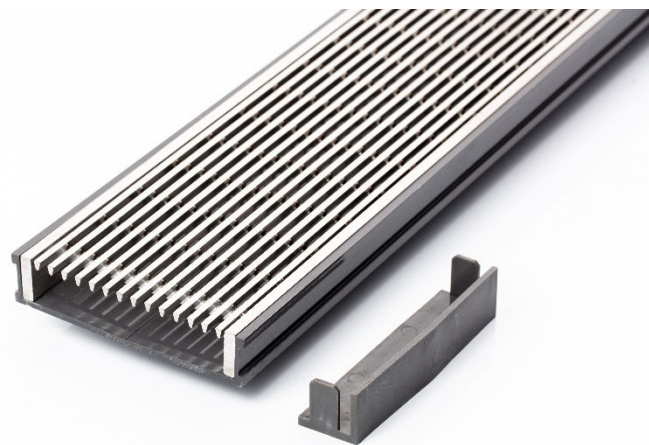
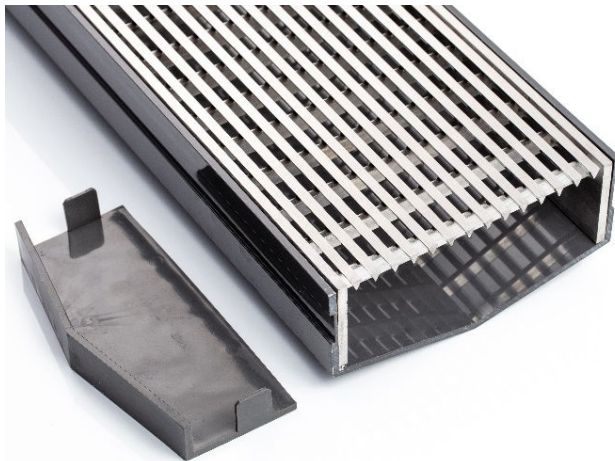
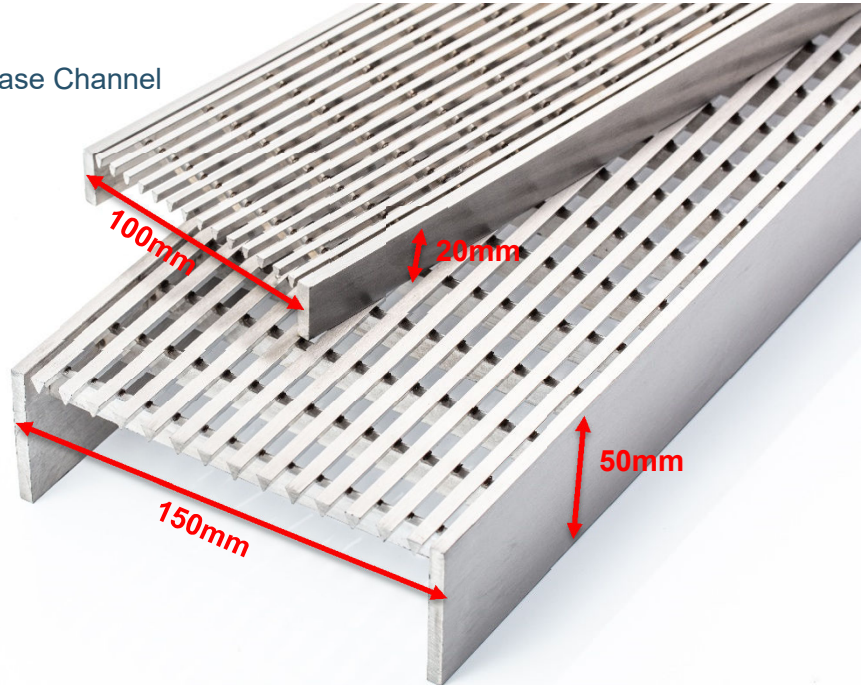
## Lengths Available

1 metre

1.5 metre

## Benefits

Short lead time





# Tile Insert Tray

PRODUCT CODE | NTL1001, NTL10015, NTL1501, NTL15015

## Options

Tile Insert Tray only to suit UPVC Base Channel

## Standard Dimensions

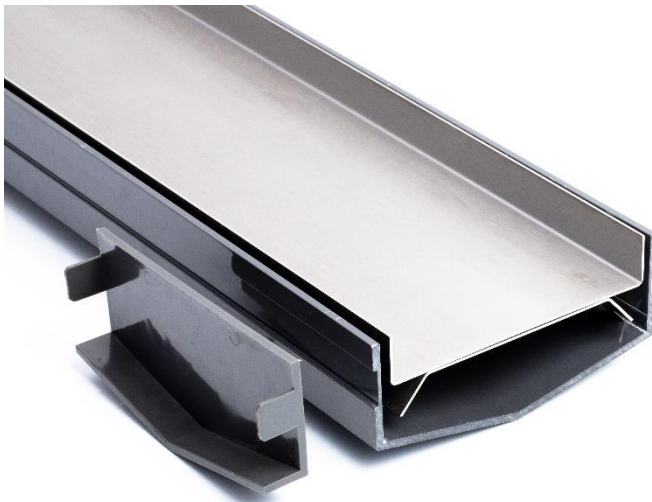
100mm wide x 20mm deep  
150mm wide x 50mm deep

## Lengths Available

1 metre  
1.5 metre

## Benefits

Short lead time



Certificate No: 23389



# UPVC Base Channel

PRODUCT CODE | NBC1001, NBC10015, NBC1003, NBC1501, NBC15015, NBC1503

## Options

Base Channel supplied in UPVC - grey

## Standard Dimensions

108mm wide x 25mm deep  
(28mm deep with end cap fitted)

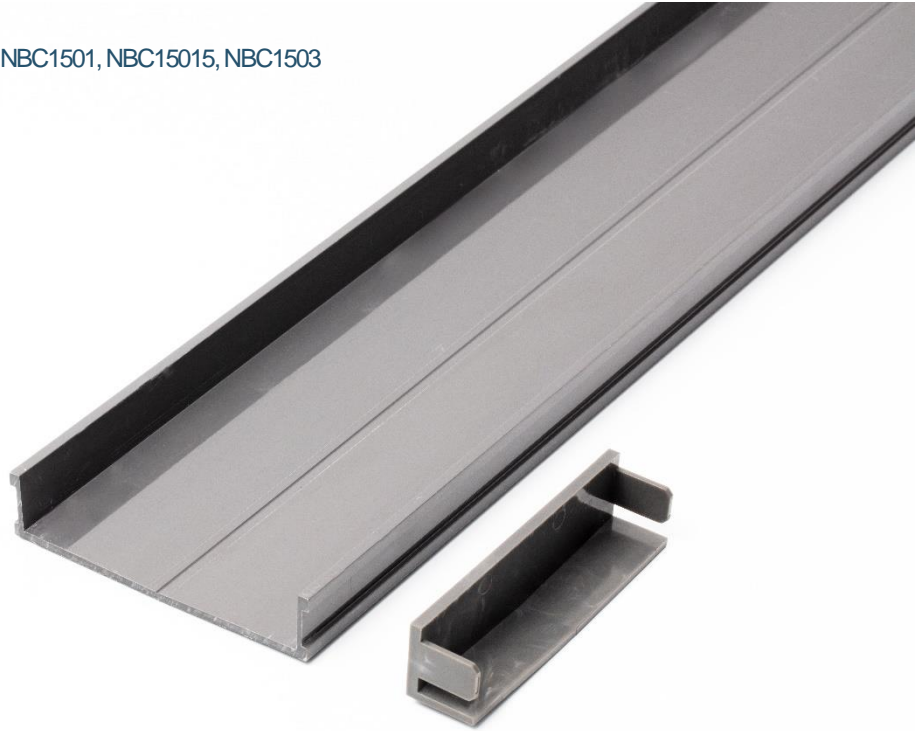
158mm wide x 69mm deep  
(72mm deep with end cap fitted)

## Lengths Available

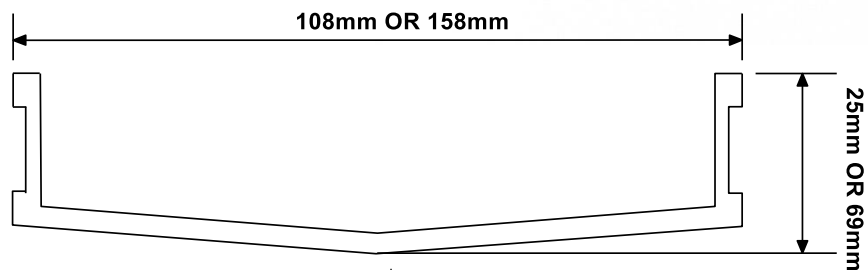
1 metre  
1.5 metre  
3 metre

## Benefits

Short lead time

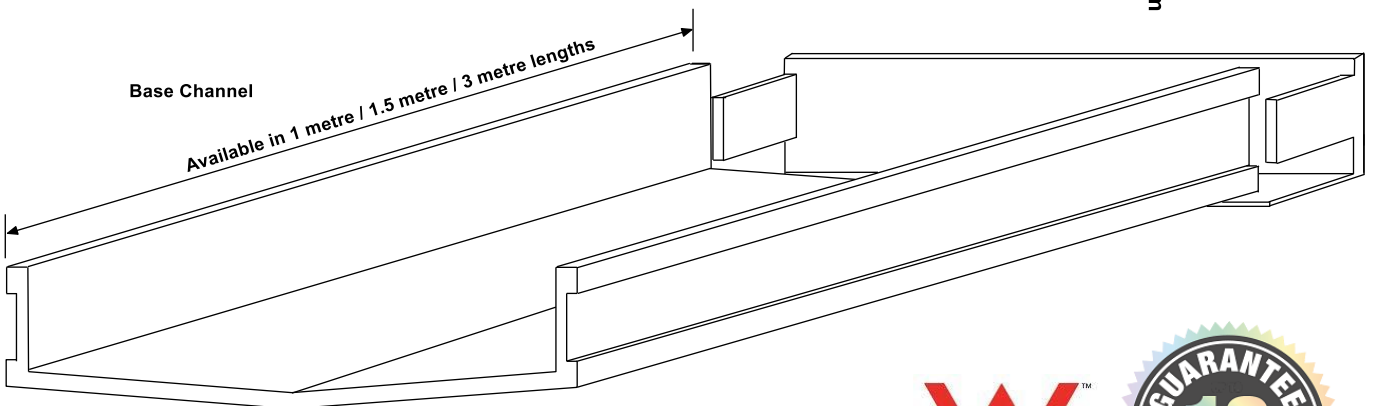


Base Channel - End View



Base Channel

Available in 1 metre / 1.5 metre / 3 metre lengths





# UPVC End Caps

PRODUCT CODE | NEC100, NEC150

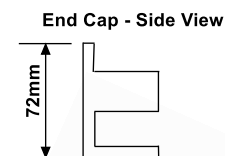
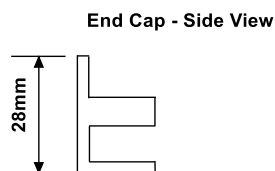
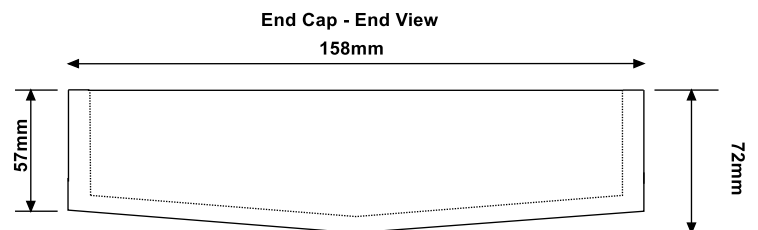
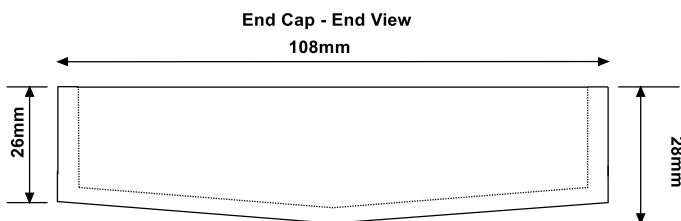
## Options

End Caps supplied in UPVC - grey

## Standard Dimensions

108mm wide x 28mm deep

158mm wide x 72mm deep



# UPVC Outlets

PRODUCT CODE | NOS43100, NOS70100, NOS83100, NOS43150, NOS 70150, NOS83150

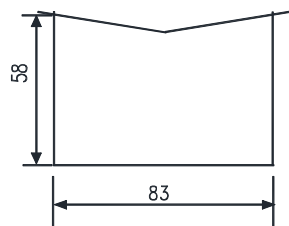
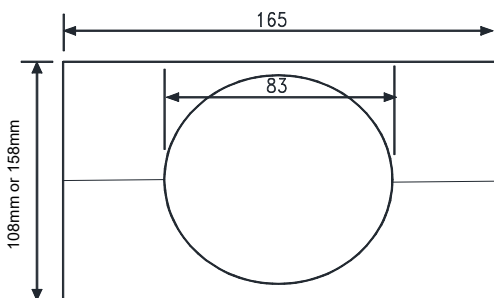
## Options

Outlets supplied in UPVC - grey

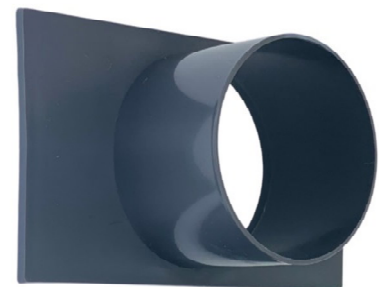
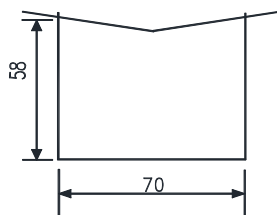
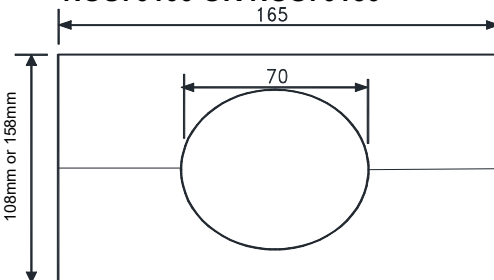
## Standard Dimensions

To suit both 108mm and 158mm wide channels

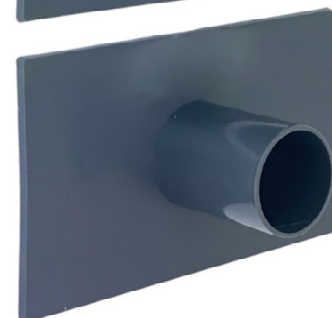
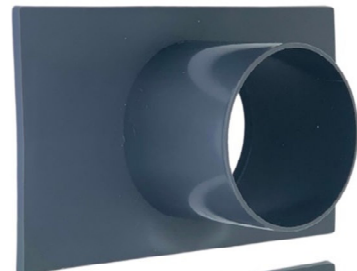
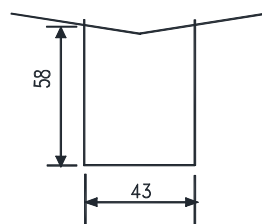
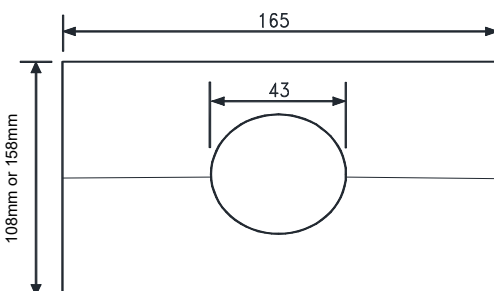
### NOS83100 OR NOS83150



### NOS70100 OR NOS70150



### NOS43100 OR NOS43150



# UPVC Joiners & Corners

PRODUCT CODE | NJS100, NJS150, NCN10090, NCN100135, NCN15090, NCN150135

## Options

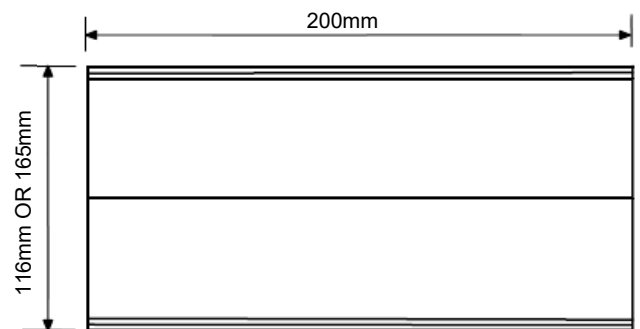
Joiners & Corners supplied in UPVC - grey

## Standard Dimensions

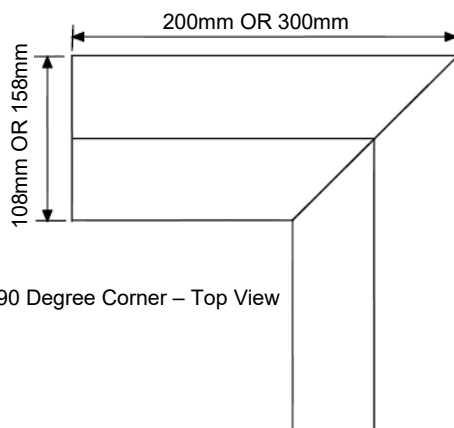
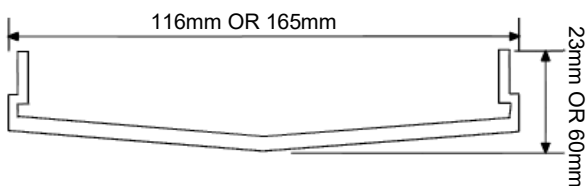
To suit both 108mm and 158mm wide channels



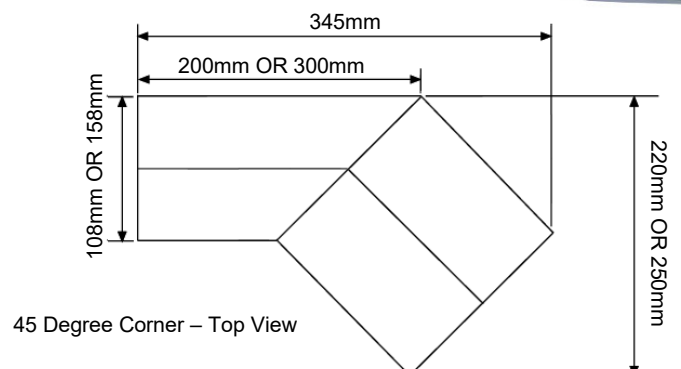
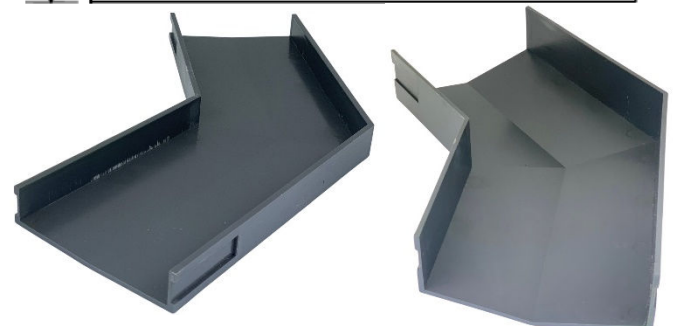
Joiner – Top View



Joiner – End View



90 Degree Corner – Top View



45 Degree Corner – Top View

